

Video Article

Fluorescence Lifetime Imaging of Molecular Rotors in Living Cells

Klaus Suhling¹, James A. Levitt¹, Pei-Hua Chung¹, Marina K. Kuimova², Gokhan Yahioglu³¹Department of Physics, King's College London²Department of Chemistry, Imperial College London³PhotoBiotics LtdCorrespondence to: Klaus Suhling at klaus.suhling@kcl.ac.ukURL: <https://www.jove.com/video/2925>DOI: [doi:10.3791/2925](https://doi.org/10.3791/2925)

Keywords: Bioengineering, Issue 60, fluorescence, microscopy, FLIM, fluorescent molecular rotors

Date Published: 2/9/2012

Citation: Suhling, K., Levitt, J.A., Chung, P., Kuimova, M.K., Yahioglu, G. Fluorescence Lifetime Imaging of Molecular Rotors in Living Cells. *J. Vis. Exp.* (60), e2925, doi:10.3791/2925 (2012).

Abstract

Diffusion is often an important rate-determining step in chemical reactions or biological processes and plays a role in a wide range of intracellular events. Viscosity is one of the key parameters affecting the diffusion of molecules and proteins, and changes in viscosity have been linked to disease and malfunction at the cellular level.¹⁻³ While methods to measure the bulk viscosity are well developed, imaging microviscosity remains a challenge. Viscosity maps of microscopic objects, such as single cells, have until recently been hard to obtain. Mapping viscosity with fluorescence techniques is advantageous because, similar to other optical techniques, it is minimally invasive, non-destructive and can be applied to living cells and tissues.

Fluorescent molecular rotors exhibit fluorescence lifetimes and quantum yields which are a function of the viscosity of their microenvironment.^{4,5} Intramolecular twisting or rotation leads to non-radiative decay from the excited state back to the ground state. A viscous environment slows this rotation or twisting, restricting access to this non-radiative decay pathway. This leads to an increase in the fluorescence quantum yield and the fluorescence lifetime. Fluorescence Lifetime Imaging (FLIM) of modified hydrophobic BODIPY dyes that act as fluorescent molecular rotors show that the fluorescence lifetime of these probes is a function of the microviscosity of their environment.⁶⁻⁸ A logarithmic plot of the fluorescence lifetime versus the solvent viscosity yields a straight line that obeys the Förster-Hoffman equation.⁹ This plot also serves as a calibration graph to convert fluorescence lifetime into viscosity.

Following incubation of living cells with the modified BODIPY fluorescent molecular rotor, a punctate dye distribution is observed in the fluorescence images. The viscosity value obtained in the puncta in live cells is around 100 times higher than that of water and of cellular cytoplasm.^{6,7} Time-resolved fluorescence anisotropy measurements yield rotational correlation times in agreement with these large microviscosity values. Mapping the fluorescence lifetime is independent of the fluorescence intensity, and thus allows the separation of probe concentration and viscosity effects.

In summary, we have developed a practical and versatile approach to map the microviscosity in cells based on FLIM of fluorescent molecular rotors.

Video Link

The video component of this article can be found at <https://www.jove.com/video/2925/>

Protocol

The protocols for FLIM sample preparation do not differ from those for confocal or wide-field intensity-based fluorescence microscopy. The data acquisition is followed by the main task of data analysis, i.e. extracting the fluorescence lifetimes from the raw data. Once these have been obtained, data interpretation helps to verify or falsify hypotheses.

1. Staining cells with molecular rotors

1. Prepare a stock solution (10 ml) by dissolving approximately 1 mg/ml of the dye in an appropriate solvent (e.g. methanol for BODIPY-C₁₂)^{6,7} using an accurate balance and a pipette.
2. The cells (a model cancer cell line, HeLa in our case) to be stained are grown on in a multiwell plate with a coverslide underside for microscopy, in an incubator at 37 °C with a 5 % CO₂ atmosphere until ~ 80% confluent.
3. Add 10 - 20 µl of the stock solution to the living cells growing in a multi-well plate (SmartSlide 50 micro-incubation system, Wafergen) in 4 ml of Opti-MEM medium (GIBCO) per well for a 6-well plate. This yields a micro-molar dye concentration in the well.
4. Return the multi-well plate to an incubator at 37 °C with a 5 % CO₂ atmosphere for 10-45 mins for staining.
5. Remove the multiwell plate from the incubator and wash the cells 3-4 times with 4 ml optically clear cell culture medium (e.g. Opti-MEM) to remove excess dye.

- Transfer the multiwell plate to the microscope stage and connect to a temperature controller / 5 % CO₂ gas inlet as required, in preparation for imaging.

2. FLIM of fluorescent molecular rotors in cells

- Place the sample on the microscope stage and obtain a transmission and fluorescence image to identify fluorescent cells. A schematic diagram of the experimental set-up is shown in Fig. 1. Verify that the fluorescence emanates from the locations expected (e.g. cell membrane, cytoplasm). Obtain a fluorescence emission spectrum, and verify that it is that of the dye or protein expected, in this case the spectrum of the molecular rotor. As a negative control, image a non-stained sample and verify that it does not fluoresce. Although this step is not essential specifically for FLIM, it is good practice in general and does help to verify that the sample is what you think it is.
- Switch to FLIM mode - this is easily accomplished by moving a mirror out of the fluorescence detection beam path ("external detector" button on "beam path setting" panel on the Leica TCS SP2 acquisition control software). An appropriate fluorescence emission filter to block any exciting light from reaching the detector must be in the fluorescence detection beam path.

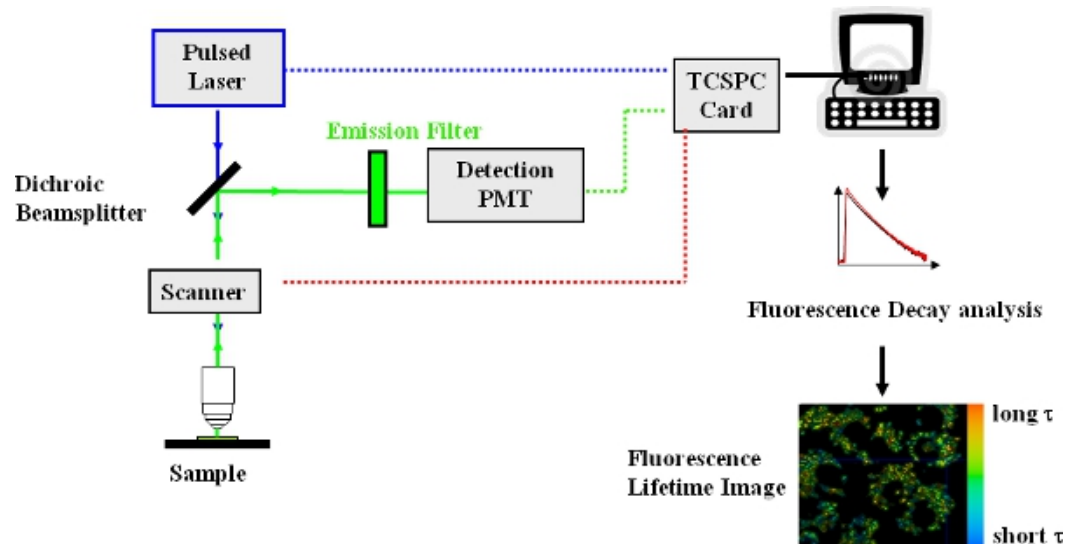


Figure 1. Experimental arrangement for time-domain FLIM using a confocal laser scanning microscope.

- Scan the sample and check, on the computer controlling the FLIM acquisition, that the detector count rate (black bar labeled CFD on acquisition control software of the Becker & Hickl SPC 830 board) is no more than about 1% of the laser repetition rate (green bar labeled SYNC acquisition control software). If it is, reduce the laser excitation intensity, e.g. by placing a neutral density filter in the laser beam path, to avoid collecting pile-up distorted fluorescence decay curves.
- Acquire a FLIM image, typically for 3-5 min, stop scanning and save the raw data (a 3D data "cube" consisting of spatial coordinates x and y, and time).
- Open the raw data in the fluorescence decay analysis software package, for example TRI-2¹⁴ or commercial software, to display the fluorescence intensity image. This is simply the integrated fluorescence decay, i.e. the area under the fluorescence decay curve, in each pixel.
- Select a typical pixel by placing the cursor on it, and inspect the fluorescence decay in that pixel. If the peak count is below 100, use spatial binning of pixels. The counts of adjacent pixels (e.g. 3x3 or 5x5) are added into the central pixel, so that a higher peak count is obtained there. This provides a higher statistical accuracy for the next step. Alternatively, the measurement could be repeated for a longer acquisition time (step 5). For 30-50min, an approximately 10 times higher peak count (and total counts) is obtained, but this is far too long an acquisition time for most biological samples because of the danger of introducing artifacts due to sample movement, microscope drift, phototoxicity and photobleaching.
- Select a global pixel threshold value (above which the decay in a pixel is fitted) and apply a single exponential decay fit to the image. The result yields a fluorescence lifetime for each pixel above the threshold, which is then encoded in color. Each pixel is colored with the result of the fit, and a FLIM map is obtained. Check the reduced chi-squared values for various pixels - around 1 (and up to 1.3) indicates a good fit. Inspect the corresponding residuals, which should be randomly distributed around zero.
- The fluorescence lifetime histogram plots how often certain fluorescence lifetimes occur versus the fluorescence lifetime itself. Adjust the colour range such that the fluorescence lifetime distribution fits into the colour range.
- If a monoexponential fit does not yield a chi-squared value of around 1 (and up to 1.3), and there is a systematic deviation of the residuals from zero, a more sophisticated model is required. For example, try fitting a double exponential model to the fluorescence decays, to account for two different environments the probe may be in. The fit will also yield the pre-exponential factors or amplitudes which give an indication of the relative amount of dye in one environment or the other. Alternatively, a stretched exponential function may be appropriate to account for a distribution of fluorescence lifetimes.
- The results for the fluorescence lifetimes, pre-exponential factors, and the lifetime ratio and the pre-exponential factor ratio for each pixel can then be encoded in color. Each pixel is coloured according to its value, and contrast due to fluorescence lifetimes, pre-exponential factors and their ratios is obtained. Again, check the reduced chi-squared values (which can also be encoded in colour and displayed as an image) - around 1 (and up to 1.3) indicates a good fit. Inspect the residuals, which should be randomly distributed around zero.

11. Fluorescence lifetime histograms should accompany all images for easy visualisation of average fluorescence lifetime values, and the fluorescence lifetime distribution.

3. Representative Results

Fluorescence decays measured for the fluorescent molecular rotor at increasing viscosity in methanol/glycerol mixtures are shown in Fig. 2. The fluorescence decays are monoexponential, and the fluorescence lifetime varies markedly as a function of viscosity. It increases from around 300 ps in methanol (viscosity 0.6 cP) to 3.4 ns in 95% glycerol (viscosity 950 cP).

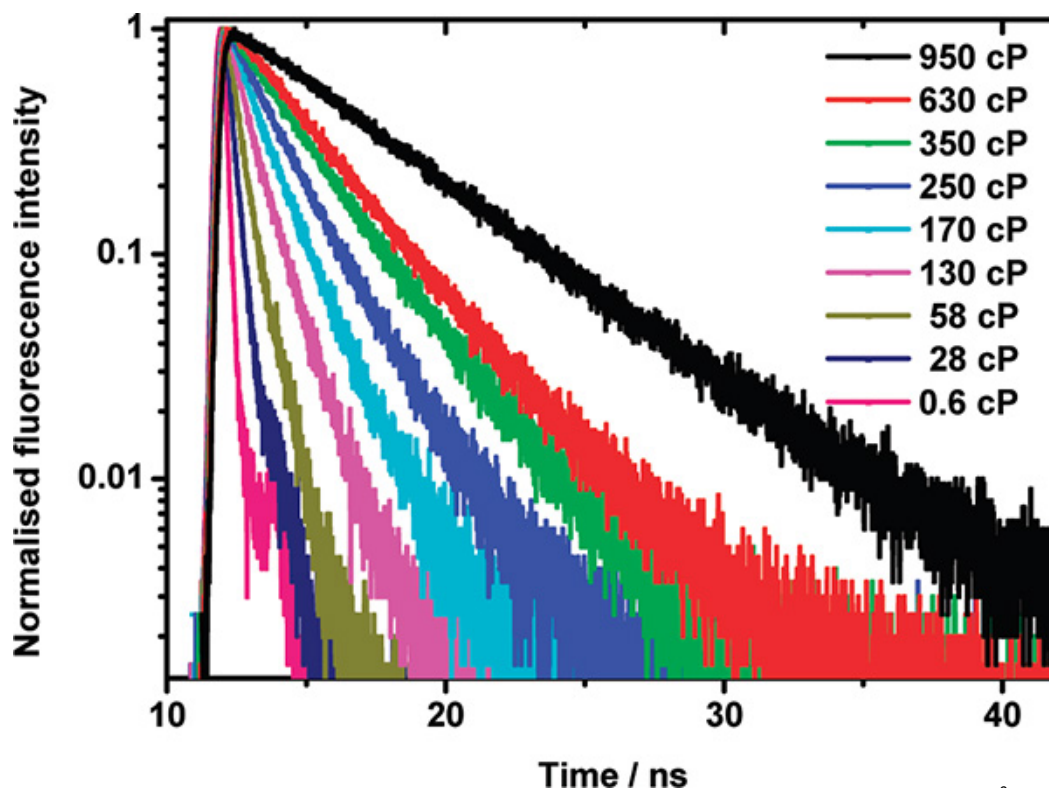


Figure 2. Fluorescence decay profiles for BODIPY-C₁₂ in methanol/glycerol mixtures of varying viscosity.⁶

The logarithmic calibration plot of fluorescence lifetime τ versus viscosity η for the fluorescent molecular rotor is shown in Fig. 3. It is a straight line as demanded by the Förster Hoffman equation⁹

$$\tau = \frac{z}{k_0 \eta^x}$$

where k_0 is the radiative rate constant, and z and x are constants, with $0 < x < 1$. Taking the logarithm on both sides yields

$$\log \tau = \log (z/k_0) + x \log \eta$$

where x is the gradient of the straight line.

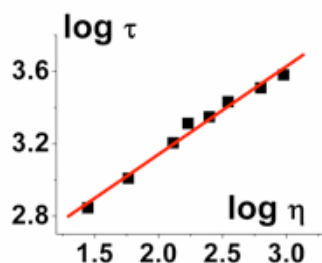


Figure 3. A plot of log fluorescence lifetime vs log viscosity for BODIPY-C₁₂ yields a straight line in accordance with the Förster-Hoffmann equation.⁶

Following incubation of living cells with the fluorescent molecular rotor a punctate dye distribution is observed in the fluorescence images. FLIM images of HeLa cells incubated with a meso-substituted BODIPY dye are shown in Fig. 4. The fluorescence decays in every pixel of the image can be adequately fitted using a single exponential decay model.

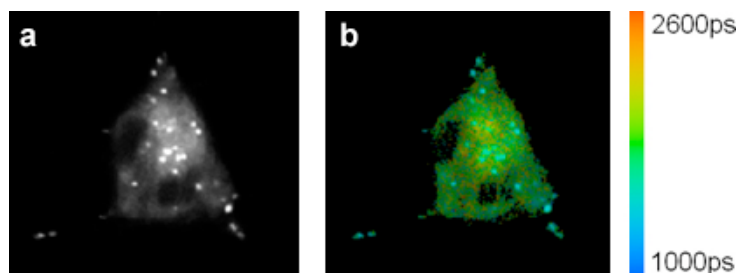


Figure 4. (a) Fluorescence intensity and (b) FLIM images of HeLa cells stained with BODIPY-C₁₂. The bright, punctate regions exhibit a shorter lifetime than other regions. This shorter lifetime corresponds to a lower viscosity in the puncta, probably lipid droplets, according to the Förster-Hoffmann equation.

By plotting the lifetimes extracted from every pixel, we obtain a fluorescence lifetime histogram of the whole image as shown in Fig. 5.

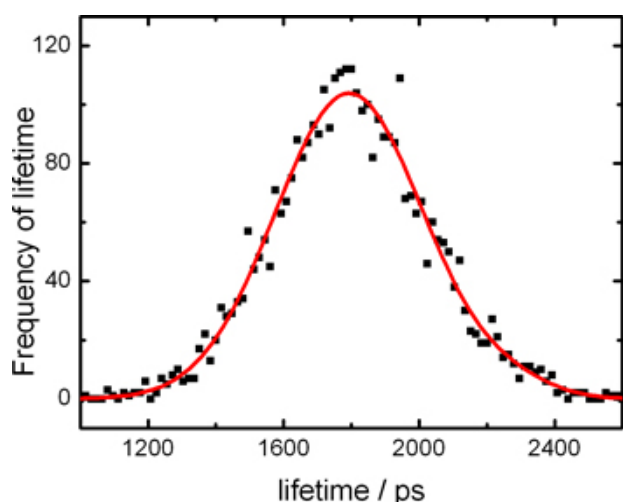


Figure 5. Histograms of fluorescence lifetimes from FLIM images of HeLa cells stained with meso-substituted BODIPY molecular rotors.

Discussion

FLIM offers some key advantages over intensity-based fluorescence imaging. It can report on photophysical events that are difficult or impossible to observe by fluorescence intensity imaging, because it can separate them from fluorophore concentration effects. This is particularly useful for mapping intracellular viscosity by imaging fluorescent molecular rotors. The fluorescence lifetime can readily be converted into a viscosity using a calibration graph, as shown in Fig. 3, independent of the concentration of fluorescent molecular rotors.

In FLIM there may be artifacts that may complicate data interpretation.¹⁰ Instrumental artifacts include scattered light which will show up as a peak on top of the beginning of the fluorescence decay and may be confused with a short decay time, or a small peak after the IRF which may be caused by reflections inside the microscope. These scattered light artifacts can be identified as such because they can be distinguished with spectral discrimination – they are always at the same wavelength as the exciting light. Remembering that in air, light travels 30 cm in 1 nanosecond helps to pinpoint the origin of reflections.

Filter or glass fluorescence could also cause an artifact, especially at low sample fluorescence, but this can easily be identified by taking a measurement without the sample: if a decay is obtained under these circumstances, it is due to the instrument and has nothing to do with the sample! On the other hand, note that sample autofluorescence may also contribute to a fluorescence decay.

In time-correlated single photon counting (TCSPC), time-to-amplitude converter (TAC) non-linearities may cause poor fits, but can be identified by blocking the excitation and shining ambient light, e.g. from the transmitted light source onto the sample and measuring the timing. A constant background should be obtained in each pixel of the image. Regions where deviations from a constant background occur, will never yield a good fit and should be avoided for the measurement if they cannot be eliminated by adjusting the parameters for the TCSPC card.

One infamous artifact in TCSPC is photon pile-up which is caused by too high a photon detection rate.^{11,12} This leads to only the first photon being timed, ignoring any subsequent photons because the electronics are busy timing and processing the first photon. Pile-up leads to a shortening of the fluorescence lifetime, and the best way to avoid this is to keep the photon count rate at around 1% of the laser repetition rate.

Outlook

There are various implementations of FLIM, and, depending on the application, each has its advantages and drawbacks.¹³ The ideal fluorescence microscope would acquire the entire multidimensional fluorescence emission contour of intensity, position, lifetime, wavelength and polarization in a single measurement, with single photon sensitivity, maximum spatial resolution and minimum acquisition time. There is presently no technology with this unique combination of features, and to build one remains a challenge for instrumentation developers. The application of new physical techniques to important problems in cell biology is often the path to unexpected discoveries, and there is a long way to go before we are close to saturating the capabilities of fluorescence imaging for cell biology. Indeed, imaging fluorescence parameters such as lifetime, spectrum and polarization, as well as imaging more rapidly in 3D at higher spatial resolution, are certain to reveal new aspects in cell biology.

Disclosures

No conflicts of interest declared.

Acknowledgements

M.K.K. thanks the U.K.'s Engineering and Physical Science Research Council (EPSRC) Life Sciences Interface program for a personal Fellowship. We would also like to acknowledge funding by the U.K.'s Biotechnology and Biological Sciences Research Council (BBSRC).

References

1. Luby-Phelps, K. Cytoarchitecture and physical properties of cytoplasm: Volume, viscosity, diffusion, intracellular surface area. *International Review of Cytology - a Survey of Cell Biology*. **192**, 189-221 (2000).
2. Stutts, M.J., Canessa, C.M., Olsen, J.C., Hamrick, M., Cohn, J.A., Rossier, B.C., & Boucher, R.C. CFTR as a CAMP-dependent regulator of sodium channels. *Science*. **269**, 847-850 (1995).
3. Dondorp, A.M., Angus, B.J., Hardeman, M.R., Chotivanich, K.T., Silamut, K., Ruangveerayuth, R., Kager, P.A., White, N.J., & Vreeken, J. Prognostic significance of reduced red blood cell deformability in severe falciparum malaria. *Am. J. Trop. Med. Hyg.* **57**, 507-511 (1997).
4. Haidekker, M.A., Nipper, M., Mustafic, A., Lichlyter, D., Dakanali, M., & Theodorakis, E.A. In *Advanced Fluorescence Reporters in Chemistry and Biology I. Fundamentals and Molecular Design*. Demchenko, A.P., ed. *Springer*, Berlin Heidelberg, **8**, 267-308 (2010).
5. Haidekker, M.A. & Theodorakis, E.A. Environment-sensitive behavior of fluorescent molecular rotors. *J. Biol. Eng.* **4**, 11 (2010).
6. Kuimova, M.K., Yahioglu, G., Levitt, J.A., & Suhling, K. Molecular Rotor Measures Viscosity of Live Cells via Fluorescence Lifetime Imaging. *Journal of the American Chemical Society*. **130**, 6672-6673 (2008).
7. Levitt, J.A., Kuimova, M.K., Yahioglu, G., Chung, P.H., Suhling, K., & Phillips, D. Membrane-Bound Molecular Rotors Measure Viscosity in Live Cells via Fluorescence Lifetime Imaging. *Journal of Physical Chemistry C*. **113**, 11634-11642 (2009).
8. Hungerford, G., Allison, A., McLoskey, D., Kuimova, M.K., Yahioglu, G., & Suhling, K. Monitoring Sol-to-Gel Transitions via Fluorescence Lifetime Determination Using Viscosity Sensitive Fluorescent Probes. *J. Phys. Chem. B*. **113**, 12067-12074 (2009).
9. Förster, T. & Hoffmann, G. Die Viskositätsabhängigkeit der Fluoreszenzquantenausbeuten einiger Farbstoffsysteme. *Zeitschrift für Physikalische Chemie Neue Folge*. **75**, 63-76 (1971).
10. vandeVen, M., Ameloot, M., Valeur, B., & Boens, N.L. Pitfalls and Their Remedies in Time-Resolved Fluorescence Spectroscopy and Microscopy. *J. Fluores.* **15**, 377-413 (2005).
11. Becker, W. *Advanced Time-Correlated Single Photon Counting Techniques*. Springer, (2005).
12. O'Connor, D.V. & Phillips, D. *Time-correlated single-photon counting*. Academic Press, New York (1984).
13. Suhling, K., French, P.M.W., & Phillips, D. Time-resolved fluorescence microscopy. *Photochem. Photobiol. Sci.* **4**, 13-22 (2005).
14. Barber, P.R., Ameer-Beg, S.M., Gilbert, J., Carlin, L.M., Keppler, M.D., Ng, T.C., & Vojnovic, B. Multiphoton time-domain fluorescence lifetime imaging microscopy: practical application to protein-protein interactions using global analysis. *Journal of the Royal Society - Interface*. **6**, S93-S105 (2009).