

## Video Article

# Preparation of Highly Coupled Rat Heart Mitochondria

Irina Gostimskaya<sup>1</sup>, Alexander Galkin<sup>2</sup><sup>1</sup>Faculty of Life Sciences, University of Manchester<sup>2</sup>School of Biological Sciences, Queen's University BelfastCorrespondence to: Alexander Galkin at [a.galkin@qub.ac.uk](mailto:a.galkin@qub.ac.uk)URL: <https://www.jove.com/video/2202>DOI: [doi:10.3791/2202](https://doi.org/10.3791/2202)

Keywords: Cellular Biology, Issue 43, Bioenergetics, Mitochondriology, Mitochondria Purification, Oxidative Phosphorylation, Cellular Respiration, Cardiology

Date Published: 9/23/2010

Citation: Gostimskaya, I., Galkin, A. Preparation of Highly Coupled Rat Heart Mitochondria. *J. Vis. Exp.* (43), e2202, doi:10.3791/2202 (2010).

## Abstract

The function of mitochondria in generation of cellular ATP in the process of oxidative phosphorylation is widely recognised. During the past decades there have been significant advances in our understanding of the functions of mitochondria other than the generation of energy. These include their role in apoptosis, acting as signalling organelles, mammalian development and ageing as well as their contribution to the coordination between cell metabolism and cell proliferation. Our understanding of biological processes modulated by mitochondria is based on robust methods for isolation and handling of intact mitochondria from tissues of the laboratory animals. Mitochondria from rat heart is one of the most common preparations for past and current studies of cellular metabolism including studies on knock-out animals.

Here we describe a detailed rapid method for isolation of intact mitochondria with a high degree of coupling. Such preparation of rat heart mitochondria is an excellent object for functional and structural research on cellular bioenergetics, transport of biomolecules, proteomic studies and analysis of mitochondrial DNA, proteins and lipids.

## Video Link

The video component of this article can be found at <https://www.jove.com/video/2202/>

## Protocol

### Introduction

Mitochondria from rat heart is one of the most common preparations for past and current studies of cellular metabolism. They can be obtained quickly and reliably in great quantity from wild type or knock-out animals. The general procedure consists of tissue digestion by trypsin, fractionation and differential centrifugation.

There are several conditions that have to be kept during Isolation of mitochondria from various tissues, including the heart (Fig. 1).

- The tissue has to be thoroughly minced, since it directly affects the yield of obtained mitochondria. Heart tissue is best to mince with small curved scissors and can be followed by use a Latapie tissue grinder or, if a tissue grinder is not available, a garlic press with outlet holes diameter of around 1.0 mm diameter.
- It is necessary to maintain the temperature of solutions at each step. Therefore the entire procedure has to be carried out in a cold room and all instruments and solutions have to be prepared and cooled in advance. If the temperature conditions are not kept stable several properties of the preparation can be lost. Mitochondrial structure is very sensitive to freezing so overfreezing of the suspension (for example during centrifugation) is not permitted, especially if studies of active transport are important.
- An important parameter is the time-length of the procedure; the isolation should be performed as quickly as possible and the obtained preparation has to be used immediately. Therefore, surgical instruments, solutions and appliances have to be prepared in advance.

### Materials and instruments

#### Instruments

1. Straight operating scissors, sharp point
2. Curved scissors
3. Forceps
4. Petri dish
5. Small funnel + piece of nylon filter (prewashed)
6. 6 beakers 50 ml
7. Two magnetic stirrers and two ice baths

8. One big ice bath
9. 2 small magnetic bars
10. Spatulas for pellet scraping
11. Centrifuge tubes
12. Latapie tissue press (can be substituted with garlic press)
13. Teflon-glass homogenisers 20ml and 1-2ml
14. Waste beaker
15. Eppendorf tubes for final mitochondrial suspension and samples for protein determination
16. Ice baths

**Solutions (calculated per 2 rats):**

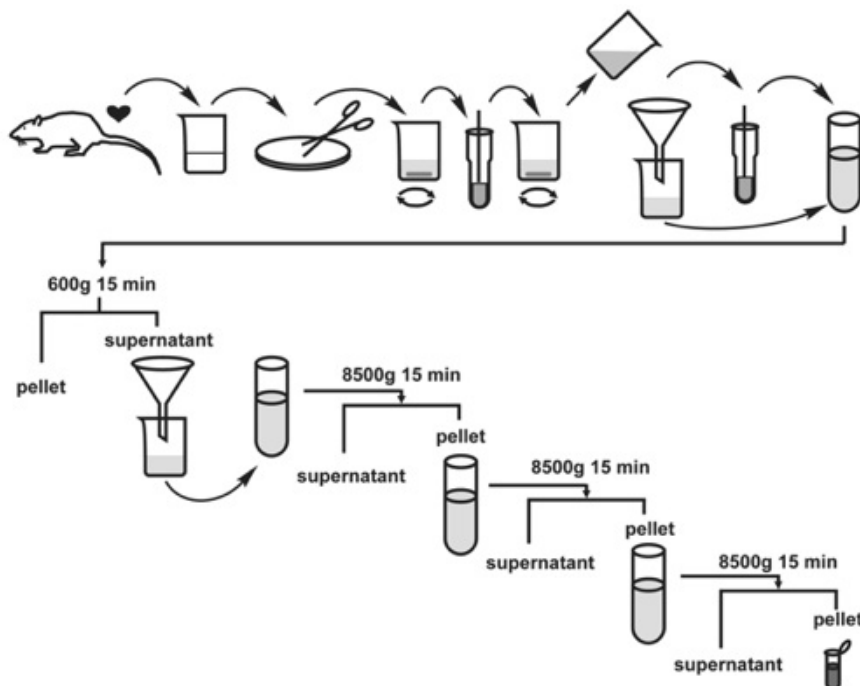
1. Washing buffer: 0.3 M Sucrose, 10 mM HEPES (pH=7.2), 0.2 mM EDTA (1000 ml)
2. Isolation buffer: 0.3 M Sucrose, 10 mM HEPES (pH=7.4), 0.2 mM EDTA, 1 mg/ml BSA (Sigma A6003) (100ml prepared from the Washing buffer). Bovine serum albumin can be substituted by less expensive fatty acid-free analogues. The same buffer or its isotonic variations can be used as Resuspending buffer.
3. Trypsin (Sigma T8003) solution: 2.5mg/ml in 1mM HCl (0.5 ml)
4. Trypsin inhibitor from soy bean (Sigma T9128) 6.5 mg/10 ml of Isolation buffer

**Protocol**

The general scheme of the procedure is shown on Fig. 1. Hearts should be cooled and washed in Washing buffer, ventricular tissue excised, minced and homogenised during photolytic treatment with trypsin. The suspension is centrifuged at low speed and the obtained supernatant is centrifuged again at higher speed to collect mitochondria. Depending on the planned experiments the resuspending buffer can be replaced by any other isotonic solution.

Animals were terminated in accordance with the U.K. "Animals (Scientific Procedures) Act." by cervical dislocation followed by decapitation. It is necessary to extract the heart immediately after decapitation of the animal, so that there is no delay between animal termination and heart extraction. If parallel isolation of liver mitochondria is expected the rats should be fasted overnight prior to the experiment.

1. Prepare three beakers containing 40 ml of Washing Buffer. Cool them in the ice-salt bath for 3 to 5 min before proceeding to the next step. Make sure not to overfreeze them and use immediately just after clouds of ice crystals start to appear.
2. Open the thorax of the decapitated rat and extract the heart. Make small incisions and then immediately transfer the heart to the ice-cold solution in the first beaker. Squeeze the heart to remove blood and put it into the second beaker. Repeat this operation for each heart.
3. Dry the hearts on the filter paper. Remove all fat, clotted blood, auricles and fasciae and pool the ventricular tissue.
4. Mince the pooled tissue with small curved scissors on the Petri dish on ice for around 5 min until the size of the particles is about 1-2 mm.
5. Put the minced tissue into the tissue press and pass it through. Be aware that a substantial amount of the material can remain in the press so collect all the heart tissue from the walls and bottom of the press.
6. Transfer the material into the beaker with 50 ml Washing Buffer and stir. Then filter the suspension through a nylon filter. Wash the minced tissue on the filter 3 times with the Washing Buffer and discard the filtrate.
7. Transfer the washed tissue into 20 ml of Washing Buffer and place it in the ice bath on the magnetic stirrer. Add 0.5 ml of trypsin solution under constant stirring and start the timer. Prepare another magnetic stirrer, ice bath and a second 50 ml beaker.
8. On the 4<sup>th</sup> minute briefly homogenise the suspension portion by portion using a small loosely fitted glass-Teflon homogeniser (10-15ml) with several up and down strokes to disperse the suspension. After homogenisation transfer the suspension into the second beaker. Repeat the procedure on the 9<sup>th</sup> minute, so that you perform the homogenisation of the suspension two times in total. After 15 min of incubation, add 10 ml of isolating buffer containing trypsin inhibitor and incubate for 1 min.
9. Filter the suspension again through a nylon filter and save the filtrate. Collect the particulate fraction left on a filter and homogenise for 1 min in 15-20 ml of Washing Buffer.
10. Combine the homogenate with the filtrate and centrifuge for 15 min at 600g.
11. Carefully filter the resulting supernatant into a new centrifuge tube. Avoid contamination by the pellet and centrifuge again for 15 min at 8500g.
12. After high speed centrifugation discard the supernatant and rinse the pellet 2-3 times with 1 ml of the buffer discarding the fluffy white outer rim layer. Break up the pellet with the spatula but avoid the red spot of erythrocytes at the bottom. If the blood cells got loose, remove the red bits from the suspension before homogenisation.
13. Resuspend the pellet with a small homogeniser or alternatively by gentle pipetting. Dilute the suspension with more Isolationbuffer and centrifuge again for 15 min at 8500g.
14. Discard the supernatant, resuspend the pellet in Resuspending Buffer (an isotonic buffer of choice) and centrifuge again.
15. The resulting brown pellet contains washed intact mitochondria. Resuspend the pellet in a very small volume of isotonic buffer of your choice.



**Figure 1.** Scheme demonstrating the step by step procedure of isolation of rat heart mitochondria. Top part, Stages 1-9: tissue disruption, trypsin treatment and homogenisation; bottom part, stages 10-15: differential centrifugation.

## Discussion

Detailed rapid protocol for isolation of intact mitochondria with a high degree of coupling is described. Obtained preparation can be used for functional or structural research on cellular bioenergetics, proteomic studies or analysis of mitochondrial DNA and lipid content. Biophysical studies of active transport of ions and metabolic intermediates can also be performed. It is possible to further process the mitochondrial preparation in order to isolate submitochondrial particles, outer membrane or purify separate components of oxidative phosphorylation. The described method is a modification of the standard protocol of isolation by Jacobus and Saks<sup>1</sup>. The expected yield of the prepared mitochondria is approximately 10-15 mg of mitochondrial protein per heart and the respiratory control ratio on malate/glutamate of such preparation varies between 8 to 12 with State IV respiration of around  $0.12 \mu\text{mol O}_2 \text{min}^{-1} \times \text{mg protein}^{-1}$  at 23°C in the medium comprising 0.25 M sucrose, 10 mM KCl, 0.2 mM EDTA, 5 mM potassium phosphate (pH 8.0) with 150  $\mu\text{M}$  ADP for initiation State III respiration (for the exact experimental conditions and additions, see ref. <sup>2</sup>).

Special attention should be given to several technical details before the starting of the isolation procedure. It is crucial to use clean polycarbonate or polypropylene centrifuge tubes, therefore tubes should be thoroughly washed with a clean brush and hot water, however the detergent treatment should be kept at the minimum. Also, it is better to collect all necessary glassware and instruments in the cold room a day before the isolation.

During the isolation when transferring buffers from flasks to beakers, a special attention should be given to prevent drops of ice water into the solutions. When handling tissues it should be stressed that heart extraction should be carried out as soon as possible since even short-time delay between decapitation of the animal and cooling the tissue would result in partially uncoupled mitochondria. Rapid cooling and thorough washing of removed hearts is essential to obtain standard preparation, free from haemoglobin and erythrocyte NADase.

Trypsin is used for connective proteins degradation to increase susceptibility of the tissue to shearing force during homogenisation. Prolonged exposure of the tissue to protease should be avoided since it results in mitochondria of inferior quality.

After high speed centrifugations the walls of the centrifuge tubes should be wiped with tissue paper to remove any deposits of fat material accumulated on the walls.

For the final resuspension it is better to use a low volume of the final buffer in order to minimise loss of mitochondrial functions during storage (150 to 200  $\mu\text{l}$  of the buffer per heart). For studies of the transport of divalent cations no chelating agents must be present in the final preparation thus mitochondria should be washed for several times with EGTA-free medium and used within first hours after isolation.

## Disclosures

No conflicts of interest declared.

## Acknowledgements

We thank Prof. A. Vinogradov and Dr Vera Grivennikova for introduction of the authors to the field of mitochondrial biology and many useful insights and advice in this procedure. The authors are grateful to Mrs Amanda McKintock from the Queens University media office for the help with the video preparation.

## References

1. Jacobus W.E., Saks V.A., Creatine kinase of heart mitochondria: changes in its kinetic properties induced by coupling to oxidative phosphorylation. *Arch. Biochem. Biophys.* 219, 167-178, (1982).
2. Gostimskaya I.S., Grivennikova, V.G., Zharova, T.V., Bakeeva, L.E., Vinogradov, A.D. *In situ* assay of the intramitochondrial enzymes: use of alamethicin for permeabilization of mitochondria. *Anal. Biochem.* 313, 46-52 (2003).